



5<sup>th</sup> General Meeting  
**Network of Asian River Basin Organizations**  
 Chiang Mai, Thailand • 15–18 May 2013

# 7<sup>th</sup> IWRM Training Program

Eng. D.C.S. Elakanda  
 Project Director

Dam Safety & Water Resources Planning Project  
 Sri Lanka



## 7<sup>th</sup> IWRM Training Program – Sri Lanka



NARBO's 7<sup>th</sup> Training on Integrated Water Resources Management  
**Solutions to Water Sector Issues through IWRM**

The Mahaweli  
 River Basin Experience  
 Sri Lanka, 2-9 November, 2012



# Organizers

The training program  
organized by NARBO

Secretariat jointly with MASL



## Venue of 7<sup>th</sup> IWRM Training Program

The Program was held at MAS Fabric Park in Thulhiriya, which is located about 65km northeast of Colombo in Sri Lanka from 2-9 November 2012.



# 26 Participants came from 8 countries..



## Day 1- Brief Ceremonial Opening of the Training Program



# Day 2 - Lectures & Poster Sessions

- Experts from MASL and other Agencies and NARBO Secretariat shared experience not only on IWRM-related matters using “IWRM Guidelines at River Basin Level”, but Mahaweli river basin’s wide variety of subjects such as **Water Resources Planning, Hydropower, Irrigation, Data sharing, Climate change adaptation, Food security, Domestic water issues** as case studies.



# Day 3 - Lectures & Poster Sessions



# Sri Lanka - Field Visit Programme

## Dambulla Ancient Rock Temple



Dambulla is situated in the 148 km north-east of Colombo and 72 km north of Kandy. It is the largest and best preserved cave temple complex in Sri Lanka. The rock towers 160 m over the surrounding plains. There are more than 80 documented caves in the surrounding. Major attractions are spread over 5 caves, which contain statues and paintings. Statues and paintings in these caves date back to the 1st century BC, and occupied continuously until today. This paintings and statues are related to Lord Buddha and his life. The murals cover an area of 2,100 m<sup>2</sup>.

## Kandy City



Kandy was the last capital of the ancient kings' era of Sri Lanka. It is situated in the central province of Sri Lanka. The city is very beautiful and surrounded by a ring of mountain ranges and Sri Lanka's longest river *Mahaweli Ganga*. Kandy is the home of the Temple of the Tooth Relic (*Sri Dalada Maligawa*), which is one of the most venerable places for the Buddhist of Sri Lanka.

Royal Botanical Garden, Peradeniya is situated about 5.5 km to the west from the Kandy city. The origins of the Botanical Gardens date as far back as 1371. The total area of the botanical garden is 147 acres (0.59 km<sup>2</sup>), at 460 meters above sea level.

Kandy City Centre is a 10 storied commercial & shopping complex which is located in near the Temple of Tooth.

## Polgolla Barrage



This is the first project of Mahaweli River Development programme. This was commenced in 1970 and completed in 1977. It comprises of a barrage across the *Mahaweli Ganga* at Polgolla to diverting waters of the river to dry zone through 5 miles long an under-ground tunnel connecting Mahaweli to the *Sudu Ganga*, and Hydro-electric power station of 40 MW.

Dam type - Concrete Barrage  
Dam Height - 14.6 m, Dam Length - 144 m  
Gross Storage - 4.1mcm, Live Storage - 2.1mcm

## Victoria Dam



Victoria dam is the highest dam in Sri Lanka and has the largest Power Station in the country. Construction work was commenced on August 14, 1978. It was ceremonially commissioned on April 12th 1985. The dam is located between the *Hulu Ganga* confluence and the *Mahaweli Ganga* rapids called "Victoria Falls" measures 507m along the crest. It consists of a double curvature arch dam of maximum height 122m, a circular concrete-lined tunnel of 6 meters diameter leading to 3 Francis turbines, each of 70 MW capacity and generating 780 Giga Watt hours, housed in a reinforced concrete power station 52 m long and 30m wide. The catchment area of this dam site is 1869 sq km and the gross capacity of the reservoir is 728 MCM at a full supply level of 438 m.

Prepared by Madusha Chandrasekera  
GIS Specialist,  
Mahaweli Authority of Sri Lanka,

## Sri Lanka - Field Visit Programme



Sri Lanka is an Island of Indian Ocean with the extent 65,610 sq km. It lies between 7° and 9° latitude and between 80° and 82° longitude. The island consists of a mountainous area in the central parts and a vast coastal plain, which surrounds it.

Despite the relatively small size of the country, there is a considerable variation in climate over time and space. The annual average rainfall varies from less than 1000 mm over a small region of the north-western and south-eastern parts of the island to over 5000 mm in a few places on the south-western slopes of the central hills. The mean annual temperature in areas below 150m ranges from 25°C to 30°C while in the hill country above 1500m; it ranges from 15° c to 19.0° c.

There are 103 river basins cover the entire land area of the island enhancing the water resources. The *Mahaweli* basin is the largest basin, which covers 10327sqkm of the island.

## Day 4 - Field Visit

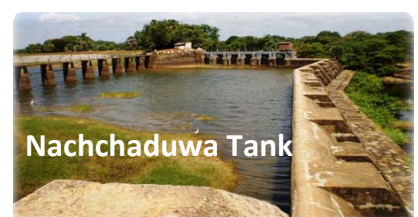
On the first day, participants visited Anuradapura (World Heritage City), Nachchaduwa and Kelawewa. At Nachchaduwa tank and the NAQDA center in Kalawewa, they met with stakeholders, who engage in farming, and exchanged their views each other.



Basawakkulama Tank



Kala Wewa



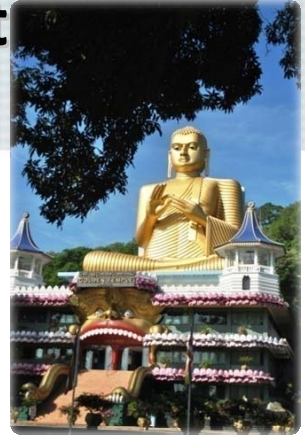
Nachchaduwa Tank



## Day 5 - Field Visit



On the second day, they visited Dambulla (famous city for rock temple), Victoria Dam, Polgolla, and Kandy. Participants observed both inside and outside of Victoria Dam and felt its hugeness at first hand.



## Day 6 - Feedback of Learning from Study Visit & Presentations

- Feedback of Learning from Study Visit
- Presented on Basin Roadmap & Investment Program
- Presented on Sectoral Perspective, Domestic Water in the Mahaweli River Basin



- Presented on Experience of Managing Recent Drought 2012
- Presented on Groundwater use of Effective IWRM
- Presented on Benchmarking & Peer Review Process in MASL



# Day 6 - Group Works



What the hardest but the most important parts of the training might be some group works



# Day 7 - Group Works



## Day 8 – Certificates Delivery



On the Last Day/Hour  
all the participants  
received certificates  
from  
NARBO Chairperson  
“Dr. Keizrul Bin  
Abdullah” and Senior  
Advisors & Vice  
Chairpersons.

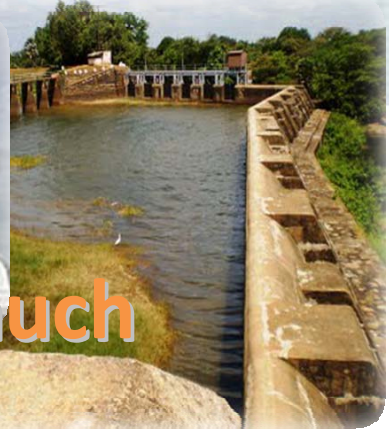
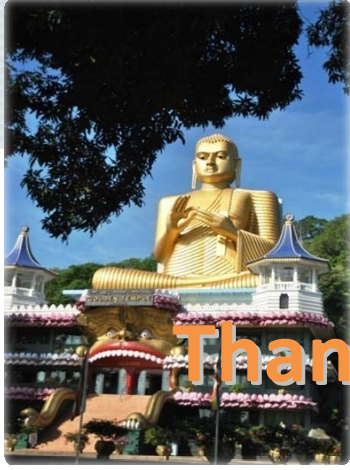


## Day-8 , Conclusion

**Mahaweli was able to conduct and conclude the 7<sup>th</sup> IWRM Training Program of NARBO, Satisfactorily.**

**Participants Evaluated the effectiveness of the program daily basis as well as at the end by using clickers and hope NARBO Secretariat would make comments , if any.**





**Thank you very much  
for your  
kind attention**

